

Cranes

For every application

Stroke power.

High pivoting torque and high lifting force - the performance data of Schlang & Reichart cranes.



The modern and high-performance forestry cranes by Schlang & Reichart forestry cranes are designed for professional service. The forest cranes are designed for loading and backing short logs. They can also be built on agricultural tractors. The crane program offers forestry cranes in various performance classes with a capacity of up to 10.0 m and a lifting capacity of 9.0 m / t. In addition to the L-crane for forestry trailers, Schlang & Reichart also offers Z-crane. These are predominantly installed on the Schlang & Reichart unimog trailer.



Cranes

Technical details



Crane construction & testing

Schlang & Reichart forestry cranes are made of especially tough special steel. The crane is rated according to crane loading class B4 for permanent dynamic loading.

Safety at handling forestry machines is a top priority at Schlang & Reichart. All cranes come with a crane test log and initial acceptance by an independent crane expert in accordance with the regulations of the BG.

Crane geometry

Schlang & Reichart forestry cranes achieve a perfect crop geometry through the so-called power link system, the knee lever system between main boom and articulated boom. Since the articulated arm can be angled up to the main arm, loading is possible directly on the front grille. As a result, the working speed is significantly increased and the range of the crane is also increased.

On-board hydraulics

The equipment of the trailer with its own oil circuit offers many advantages and is possible for all Schlang & Reichart forestry cranes. This variant of the hydraulic supply is ideal for vehicles with low hydraulic power and for common use with different tractors. The hydraulic oil tank is protected between the support and the hydraulic pump integrated into the drawbar.





Slewing gear

The four-cylinder swivel of Schlang & Reichart forestry cranes is particularly sturdy and strong. This guarantees a high pivoting moment, which also allows a comfortable and powerful loading against the slope. The large distance between the bearings and the oil immersion bath ensure reliable operation. Shear forces that are generated when working with heavy trunks are safely absorbed.



Hose routing

Low downtimes and maximum safety are the goals for crane work. The protected hose routing from the control block to the crane tip secures these objectives. Schlang & Reichart therefore attaches the highest priority to ensuring that the hydraulic hoses are protected over the entire crane by being concealed (internal routing). At points of high physical loading, the hoses are laid in a hose shaft. Additional rotary cutouts increase the service life of the hydraulic hoses.





Rapid traverse valve

Schlang & Reichart forestry cranes are fitted as standard with a rapid flow valve. This enables the rapid telescopic extension even in the case of telescopic booms with only one extension. The electrically controlled rapid traverse valve directs the hydraulic oil, which flows from the cylinder straight back into the latter and thus achieves an approx. 1.5 fold extension speed.

Crane control

The highest performance is achieved when the controls are perfectly ergonomic. This is determined by the operating position and the crane controller. Schlang & Reichart forestry cranes are equipped as standard with a mechanical control block, which has two cross levers each with an electrical switch. This means that the individual boom movements can be easily and rapidly coordinated, without having to reach for different control levers or turning. In addition to a mechanical crane control, the crane can also be operated via an EHC controller with a cord or wireless control panel. The crane can also be controlled via two toggle switches that are installed on a rotary seat in the tractor.



Operating station

The serially installed Schlang & Reichart operator station on the trailer body provides a clear working position outside the hazardous area with the best view of the loading crane and the safety-relevant environment. The back rest of the platform and the hand guard over the control toggles optimize the operator's safety and ensure that he adopts an ergonomic working stance.



Stabilisers

All cranes are equipped with a flap-down support at Schlang & Reichart. Thanks to a wide supporting position, this provides optimum stability when working with the loading crane. In contrast to other support systems, this form of support also allows a safe working position when standing on a slope. Thanks to a special protection system, the powerful cylinders are not damaged even in the case of falling trunks.



Crane cable winch

The optionally available crane winch with radio control increases the working range of the crane and enables trunks which lie outside the range of the crane.

The pulling force is 1.5 t. in series the crane winch is equipped with with a 30 m cable. Optionally up to a 50 m cable can be supplied.



Implements

Schlang & Reichart cranes can be equipped with various working tools for ergonomic and safe loading work. A 4-finger gripper can also be mounted next to the two-blade gripper. With this, the loading of branch and cutting material is made much easier. Clam shell grippers can be mounted on the regular grippers for loading dry bulk.



Operating hours counter

The operating hours counter records the hours in which the loading crane is service. This is especially useful if the forwarding trailer is shared by several users or is hired out.



Trunk scraper

A trunk scraper facilitates loading work with the forestry crane, especially with long sections or very long treetop material. The scraper is mounted on the main boom of the crane.

Loading crane with top-mounted cylinder

Technical specs



Loading crane	4167	4177	5169	5180	5186
Crane length	6,620 mm	7,550 mm	6,710 mm	8,000 mm	8,600 mm
Lift moment net	52 kNm	52 kNm	69 kNm	69 kNm	51 kNm
Lift moment net	41 kNm	41 kNm	51 kNm	51 kNm	51 kNm
Telescope	single	single	single	single	double
Pivoting moment	15.2 kNm	15.2 kNm	21.5 kNm	21.5 kNm	21.5 kNm
Slewing range	370°	370°	370°	370°	370°
Rotator, infinite	4.5 t	4.5 t	4.5 t	4.5 t	4.5 t
Grippers	Two-row gripper type 230 (opening width 1.250 mm)				
Crane control	2 control toggles with 2 electrical functions				
Operating pressure	190 bar	190 bar	190 bar	190 bar	190 bar
Pump flow rate recommended	35 - 90 l/min	35 - 90 l/min	50 - 100 l/min	50 - 100 l/min	50 - 100 l/min
Weight (approx.)	825 kg	905 kg	935 kg	1,035 kg	-



Loading crane	51100	6169	6180	6186	61100
Crane length	10,000 mm	6,710 mm	7,980 mm	8,600 mm	9,950 mm
Lift moment net	69 kNm	86 kNm	86 kNm	86 kNm	86 kNm
Lift moment net	51 kNm	61 kNm	61 kNm	61 kNm	61 kNm
Telescope	double	single	single	double	double
Pivoting moment	21.5 kNm	25 kNm	25 kNm	25 kNm	25 kNm
Slewing range	370°	370°	370°	370°	370°
Rotator, infinite	4.5 t	6.0 t	6.0 t	6.0 t	6.0 t
Grippers	Two-row gripper type 230 (opening width 1.250 mm)				
Crane control	2 control toggles with 2 electrical functions				
Operating pressure	190 bar	215 bar	215 bar	215 bar	215 bar
Pump flow rate recommended	50 - 10 l/min	50 - 10 l/min	50 - 10 l/min	50 - 10 l/min	50 - 10 l/min
Weight (approx.)	1,125 kg	935 kg	1,035 kg	-	1,125 kg

Loading cranes with standing cylinder (bottom)

Technical specs



Loading crane	4267	4272	4280
Crane length	6,370 mm	7,140 mm	7,850 mm
Lift moment net	56 kNm	56 kNm	56 kNm
Lift moment net	40.5 kNm	40.5 kNm	41 kNm
Telescope	single	single	single
Pivoting moment	15.2 kNm	15.2 kNm	15.2 kNm
Slewing range	370°	370°	370°
Rotator, infinite	4.5 t	4.5 t	4.5 t
Grippers	Two-row gripper type 230 (opening width 1.250 mm)		
Crane control	2 control toggles with 2 electrical functions		
Operating pressure	190 bar	190 bar	190 bar
Pump flow rate recommended	35 - 90 l/min	35 - 90 l/min	35 - 90 l/min
Weight (approx.)	910 kg	990 kg	1,070 kg



Loading crane	5280	5285	5286	52100
Crane length	7,800 mm	8,500 mm	8,600 mm	9,800 mm
Lift moment net	70 kNm	70 kNm	70 kNm	70 kNm
Lift moment net	50 kNm	50 kNm	50 kNm	51 kNm
Telescope	single	single	double	double
Pivoting moment	21.5 kNm	21.5 kNm	21.5 kNm	21.5 kNm
Slewing range	370°	370°	370°	370°
Rotator, infinite	4.5 t	4.5 t	4.5 t	4.5 t
Grippers	Two-row gripper type 230 (opening width 1.250 mm)			
Crane control	2 control toggles with 2 electrical functions			
Operating pressure	205 bar	205 bar	205 bar	210 bar
Pump flow rate recommended	50 - 100 l/min	50 - 100 l/min	50 - 120 l/min	50 - 120 l/min
Weight (approx.)	1,150 kg	-	1,240 kg	1,290 kg



Loading crane	6280	6286	62100
Crane length	7,750 mm	8,600 mm	9,590 mm
Lift moment net	79 kNm	79 kNm	79 kNm
Lift moment net	61 kNm	62 kNm	62 kNm
Telescope	single	double	double
Pivoting moment	25 kNm	25 kNm	25 kNm
Slewing range	370°	370°	370°
Rotator, infinite	4.5 t	4.5 t	6.0 t
Grippers	Two-row gripper type 230 (opening width 1.250 mm)		
Crane control	2 control toggles with 2 electrical functions		
Operating pressure	220 bar	220 bar	220 bar
Pump flow rate recommended	50 - 120 l/min	50 - 120 l/min	50 - 120 l/min
Weight (approx.)	1,180 kg	1,270 kg	1,310 kg



Construction cranes

Technical specs



Loading crane	5153	5167	7169
Crane length	5,090 mm	6,830 mm	6,930 mm
Lift moment net	69 kNm	69 kNm	106 kNm
Lift moment net	51 kNm	51 kNm	7 kNm
Telescope	single	double	double
Pivoting moment	21.5 kNm	21.5 kNm	27 kNm
Slewing range	160°	160°	160°
Rotator, infinite	6.0 t	6.0 t	10.0 t
Grippers	Two-row gripper type 270 (opening width 1.560 mm)		
Crane control	6-way EHC control with 2 joysticks		
Operating pressure	190 bar	190 bar	210 bar
Pump flow rate recommended	35 - 90 l/min	35 - 90 l/min	50 - 100 l/min
Weight (approx.)	820 kg	850 kg	1,220 kg



Loading crane	7182	7185	71100
Crane length	8,190 mm	8,300 mm	10,000 mm
Lift moment net	106 kNm	106 kNm	112 kNm
Lift moment net	70 kNm	70 kNm	70 kNm
Telescope	double	double	double
Pivoting moment	32 kNm	27 kNm	27 kNm
Slewing range	160°	360°	360°
Rotator, infinite	10.0 t	10.0 t	10.0 t
Grippers	Two-row gripper type 360 (opening width 1.840 mm)		
Crane control	6-way EHC control with 2 joysticks		
Operating pressure	210 bar	210 bar	210 bar
Pump flow rate recommended	50 - 100 l/min	50 - 100 l/min	50 - 100 l/min
Weight (approx.)	1,360 kg	1,320 kg	1,420 kg

Z-cranes

Technical specs



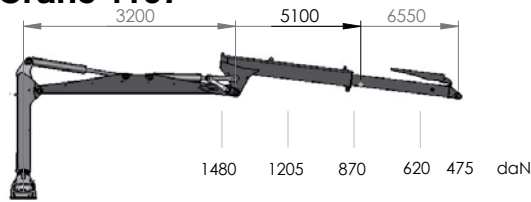
Loading crane	Z4359	Z5376	Z5388
Crane length	5,700 mm	7,600 mm	8,800 mm
Lift moment net	40.5 kNm	51 kNm	51 kNm
Telescope	single	single	double
Pivoting moment	15.2 kNm	21.5 kNm	21.5 kNm
Slewing range	370°	370°	370°
Grippers	Two-row gripper type 230 (opening width 1.250 mm)		
Crane control	2 control toggles with 2 electrical functions		
Operating pressure	190 bar	190 bar	200 bar
Pump flow rate recommended	35 - 90 l/min		
Weight (approx.)	945 kg	1,125 kg	1,180 kg

The stated lift moments are maximum values and do not indicate the continuous lifting force. All figures are understood to exclude gripper and rotator. The maximum lifting force can only be achieved when sufficient hydraulic pressure is provided by the tractor unit or on the on-board hydraulics. The maximum system pressure must be adjusted so that the stability of the vehicle is assured.

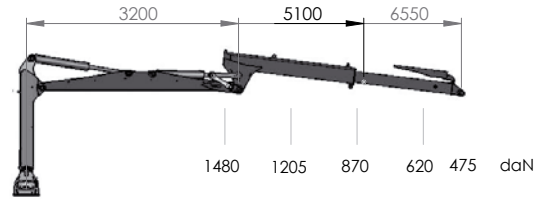
Cranes

Stroke diagrams and dimensions

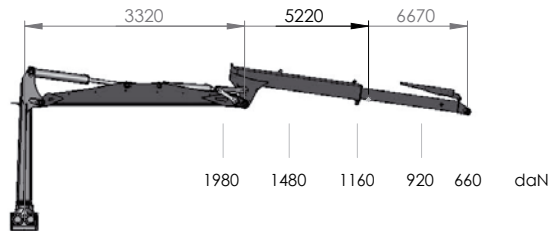
Crane 4167



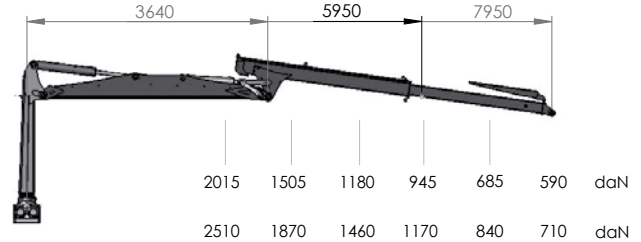
Crane 4177



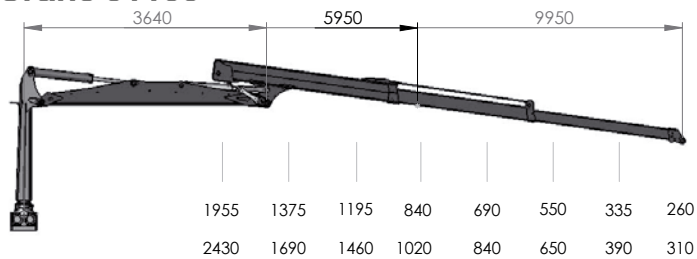
Crane 5169



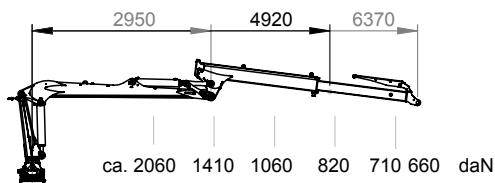
**Crane 5180
Crane 6180**



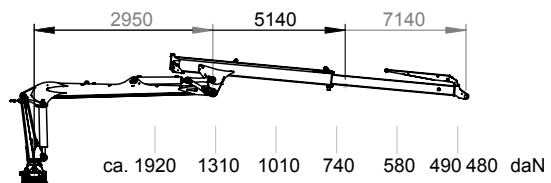
**Crane 51100
Crane 61100**



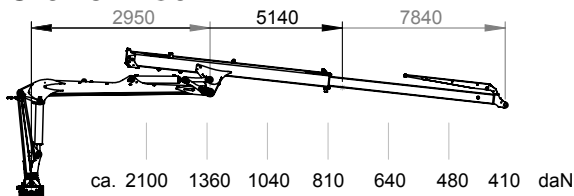
Crane 4267



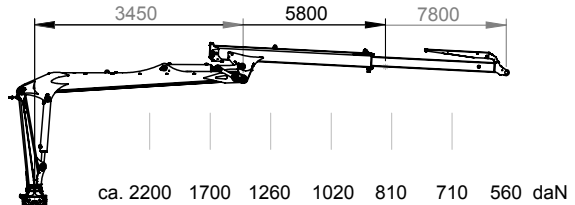
Crane 4272



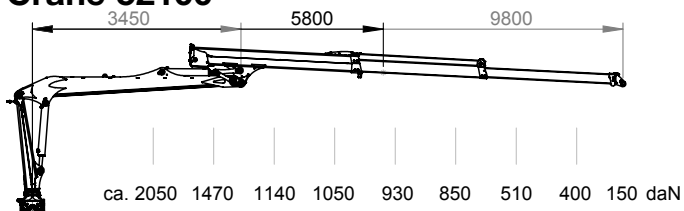
Crane 4280



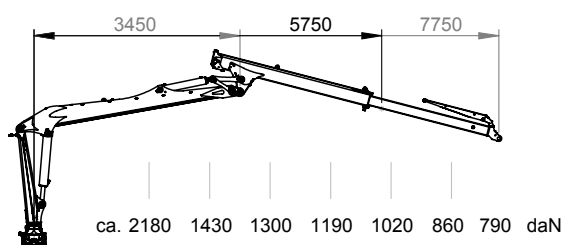
Crane 5280



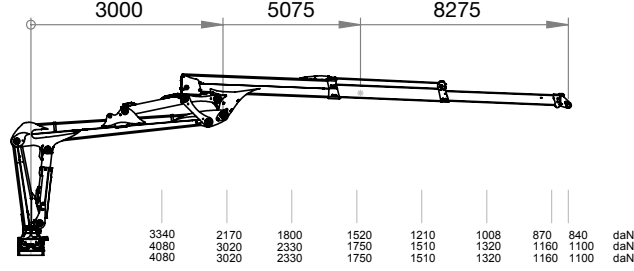
Crane 52100



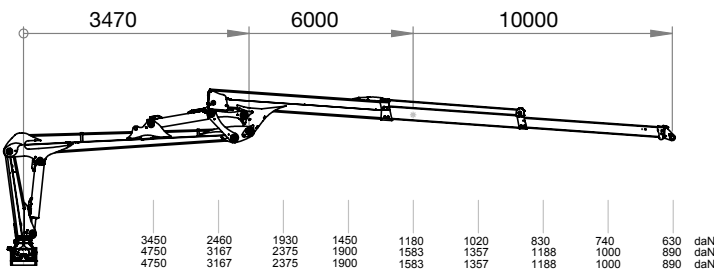
Crane 6280



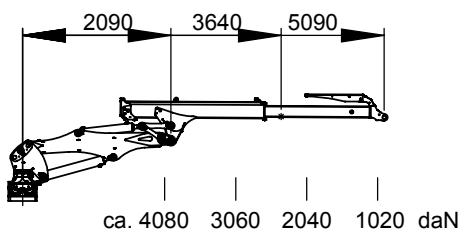
Crane 7185
Crane 9185
Crane 9385



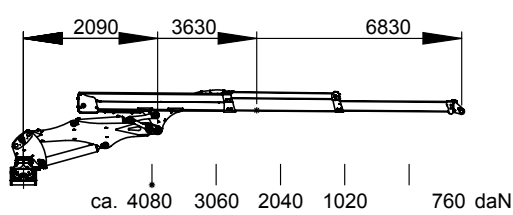
Crane 71100
Crane 91100
Crane 93100



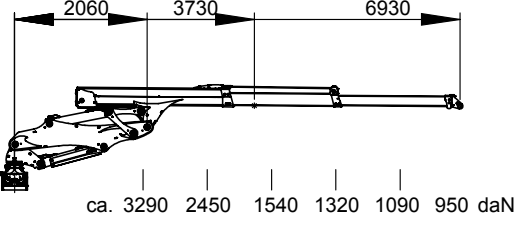
Crane 5153



Crane 5167



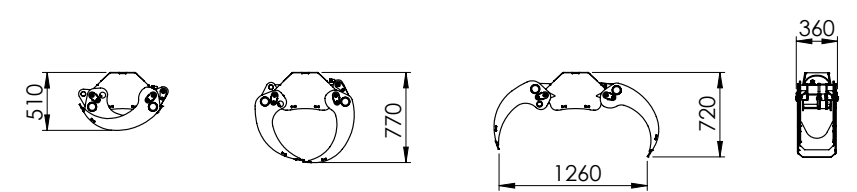
Crane 7169



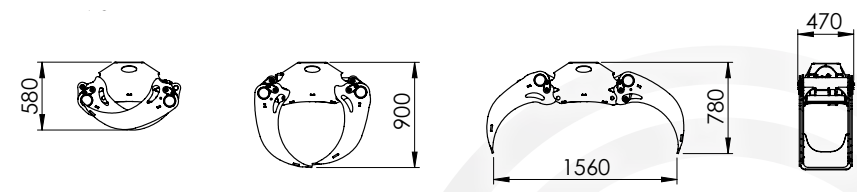
Grippers

Gripper type 230

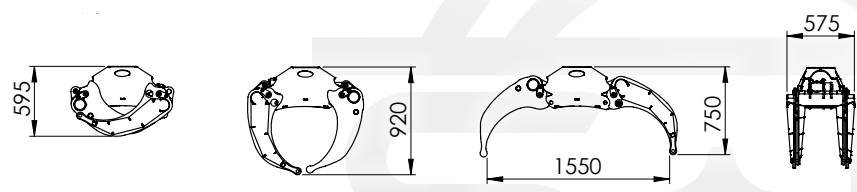
Gripper type 230, 4-finger



Type 270



Type 270, 4-finger



Gripper type 360

